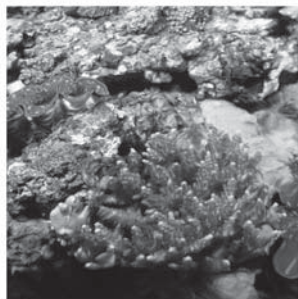


Total price list



TUNZE[®]

**High-Tech
Aquarium Ecology**



TUNZE Aquarientechnik GmbH
Seeshaupter Str. 68
82377 Penzberg
Germany
Tel. 0049-8856/2022
Fax 0049-8856/2021
www.tunze.com

TUNZE UK
5. Apsley Way
Worthing / West Sussex BN13 3RE
United Kingdom
Tel.: +44 (1273) 700460
Fax.: +44 (1273) 701691

01/2014



TUNZE Total price list

The deliveries are made in compliance with our respectively applicable terms of delivery and payment. Prices in £.
Valid as from January 01, 2014. Subject to alterations. Any Exchange Rate fluctuations may cause price differences.

Art. No.	Designation	Price £	VAT 20%	Art. No.	Designation	Price £	VAT 20%
0015.000	Skimmer Kit 15	464.73	557.70	0220.550	Power Magnet 220.55	89.65	107.60
0016.000	Compact Kit 16	678.35	814.00	0220.558	Felt on the outside, 77 x 59mm (3.03 x 2.3 in.)	2.94	3.50
0018.000	Compact Kit 18	1167.89	1401.50	0220.560	Power Magnet 220.56	167.45	200.90
0018.700	Compact Kit 18.7	1290.51	1548.60	0220.568	Fleece for acrylic panes	1.10	1.30
0068.000	Calcium Dispenser Kit 68	219.02	262.80	0220.570	Power Magnet 220.57	359.04	430.80
0075.000	Kit 75	676.53	811.80	0220.571	Rough surface, 115 x 77mm (4.5 x 3.0 in.)	4.49	5.40
0079.000	Kit 79	491.19	589.40	0220.572	Felt on the outside, 115 x 77mm (4.5 x 3.03 in.)	7.38	8.90
0085.000_A	Saltwater Aquarium	10.08	12.10	0220.700	Cleaning set	42.79	51.30
0090.000	TUNZE catalogue - German / €	2.31	2.80	0220.701	1/8" Brush	4.14	5.00
0090.000_A	TUNZE catalogue - English / \$US	2.31	2.80	0220.702	1/4" Brush	2.52	3.00
0090.000_C	TUNZE catalogue Czech / €	2.31	2.80	0220.703	3/4" Brush	3.00	3.60
0090.000_E	TUNZE catalogue - English	2.31	2.80	0220.704	Bottle brush	3.95	4.70
0090.000_F	TUNZE catalogue - French / €	2.31	2.80	0220.705	Bristle brush	1.90	2.30
0090.000_G	TUNZE catalogue - English / £	2.31	2.80	0220.706	TUNZE towel	8.68	10.40
0090.000_H	TUNZE catalogue - Hungarian / €	2.31	2.80	0220.707	Pick tool	2.81	3.40
0090.000_I	TUNZE catalogue - Italian / €	2.31	2.80	0220.708	Screwdriver	5.24	6.30
0090.000_O	TUNZE catalogue Portuguese / €	2.31	2.80	0220.709	Instructional DVD	6.40	7.70
0090.000_P	TUNZE catalogue - Polish / €	2.31	2.80	0220.710	Citric acid	6.18	7.40
0090.000_R	TUNZE catalogue - Russian	2.31	2.80	0220.711	Squirt applicator	2.67	3.20
0090.000_S	TUNZE catalogue Spanish / €	2.31	2.80	0220.712	Towel	7.73	9.30
0094.100	TUNZE® mug	7.64	9.20	0230.050	Disc	8.98	10.80
0097.000	DVD: TUNZE Aquarientechnik GmbH	7.85	9.40	0230.101	Screw M5x6mm, white	1.35	1.60
0097.500	DVD: TUNZE Introduces (PAL)	7.85	9.40	0230.250	Skimmer support	9.87	11.80
0097.500_A	DVD: TUNZE Introduces NTSC	8.21	9.90	0230.252	2 screw+2 nuts M6x25mm	1.64	2.00
0102.400	Universal clamp V4A	11.39	13.70	0230.350	Pressure pipe	1.94	2.30
0102.404	Screw knob	0.86	1.00	0230.490	Silencer w.air hose	7.49	9.00
0102.407	Disc	0.95	1.10	0230.550	Pump support	14.78	17.70
0102.410	Mounting bracket	6.48	7.80	0230.660	Skimmer casing	40.96	49.20
0102.430	Screw M6x12 V4A	0.72	0.90	0233.120	Impeller	6.82	8.20
0102.450	Mounting clamp	6.86	8.20	0235.120	HP Impeller	6.82	8.20
0104.190	Screw M3x10 V2A	0.67	0.80	0235.135	Nozzle	5.01	6.00
0104.250	Repair kit	4.85	5.80	0235.140	2 clips	2.73	3.30
0104.720	Silicone, 50 ml (1.7 oz.)	4.41	5.30	0235.481	Cap H14, ø 26mm	1.04	1.20
0104.730	Instant adhesive	4.95	5.90	0235.484	Cap	1.04	1.20
0104.740	Coral Gum, 112 g (4 oz.)	8.62	10.30	0240.484	Reducing adaptor for hose	0.83	1.00
0104.750	Coral Gum instant, 120 g (4.23 oz.)	14.31	17.20	0250.000	Comline® Reefpack 250	137.17	164.60
0104.760	Coral Gum instant, 400g (14.11oz.)	31.49	37.80	0300.000	Cartridge Filter 300	8.75	10.50
0104.790	Strainer, 7cm (2.7 in.)	5.02	6.00	0300.020	Filter cartridges, 75mm (2.9 in.)	11.58	13.90
0110.090	Fan	1.96	2.40	0300.060	Strainer	3.01	3.60
0110.130	Shaft with pinion	4.19	5.00	0312.344	Glue-in nipple for hose, diam. 9mm (.35 in.)	0.80	1.00
0110.140	Thrust washer	1.58	1.90	0320.000	Pot Filter 320	17.03	20.40
0110.260	Motor bearing	10.26	12.30	0320.260	Strainer	2.87	3.40
0121.131	Shaft	4.11	4.90	0370.000	Cartridge 370	10.97	13.20
0121.160	Impeller housing	20.33	24.40	0390.040	Union for hose, diam. 6x9mm (.23 x .35 in.)	0.69	0.80
0121.170	Impeller	7.09	8.50	0390.460	Y branch	3.40	4.10
0141.140	Thrust washer, 2 pcs.	3.18	3.80	0505.000	Reefpack 505	413.35	496.00
0141.150	Impeller bushing, 2pcs.	4.60	5.50	0505.110	O-ring seal	1.15	1.40
0141.160	Impeller housing	20.33	24.40	0602.120	Impeller	4.19	5.00
0141.170	Impeller	8.65	10.40	0605.000	Riverpack 605	238.76	286.50
0141.180	Intake fitting	8.72	10.50	0800.000	Cartridge Filter 800	13.48	16.20
0210.049	Suction cups 4 pcs.	2.76	3.30	0800.010	Filter cartridges, 135mm (5.3 in.)	7.96	9.60
0214.150	Skimmer cup lid	10.97	13.20	0800.030	Carbon floss cartridge, 135mm (5.3 in.), 1 pc.	3.34	4.00
0220.140	Skimmer cup	37.55	45.10	0800.040	Nano pump	30.62	36.70
0220.400	Aquarium tongs	19.80	23.80	0800.042	Drive unit for 800.04 (50 Hz)	5.95	7.10
0220.430	Hole cap ø 26mm	1.57	1.90	0800.043	Cover on impeller housing	3.89	4.70
0220.500	Brush Set	10.55	12.70	0800.047	Outlet pipe, diam. 13 mm (.51in.)	2.34	2.80
0220.510	Protective gloves	4.60	5.50	0800.048	Pump cover	4.11	4.90
0220.521	Rough surface, 77 x 59mm (3.0 x 2.3 in.)	1.85	2.20	0800.060	Strainer	5.69	6.80
0220.526	Pile fabric surface, 77 x 5 mm (3.03 x 2.3 in.)	1.28	1.50	0800.070	Screw cap for PAF	2.77	3.30
0220.530	Power Magnet 220.53	13.56	16.30	0800.080	Bracket	3.18	3.80
0220.540	Power Magnet 220.54	25.57	30.70	0800.140	Foam cartridge	2.67	3.20



Total price list

Art. No.	Designation	Price £	VAT 20%	Art. No.	Designation	Price £	VAT 20%
0800.220	Cartridge filter mat	1.80	2.20	1073.024	Housing locking bar	5.77	6.90
0805.000	Turbelle® e-jet 805	67.86	81.40	1073.025	4 suction cups + 2 hose supports	6.88	8.30
0805.015	Motor block	36.07	43.30	1073.027	Drive unit with bushing	16.69	20.00
0805.700	Drive unit	14.70	17.60	1073.040	Recirculation Pump Silence	96.51	115.80
0808.100	TS mounting bar - 97 cm (38.1 in.)	13.33	16.00	1073.041	Screw cap 3/4 in., 10 bar (145 psi)	2.91	3.50
0820.000	Pot Filter 820	22.87	27.40	1073.042	Drive unit for 1073.03/04 old	19.12	22.90
0820.250	Cover f. F320/820	5.14	6.20	1073.044	Screwed socket with O ring seal	3.89	4.70
0820.260	Strainer	5.69	6.80	1073.047	Drive unit with bushing	40.07	48.10
0820.280	Pot for 820	13.06	15.70	1073.050	Recirculation pump Silence electronic	146.09	175.30
0820.290	Return stop	1.59	1.90	1073.082	Cover with O ring seal	4.97	6.00
0850.100.S	TS bell compl.	19.78	23.70	1073.083	Suction housing	5.92	7.10
0851.320.S	Adapter	2.07	2.50	1073.084	Housing locking bar	5.06	6.10
0870.000	Cartridge 870	14.81	17.80	1073.085	4 suction cups + 2 hose supports	3.77	4.50
0870.010	Bio cartridge	8.65	10.40	1073.087	Drive unit with shaft	6.91	8.30
0870.020	Cover for 870/1670	1.34	1.60	1073.091	3 O-rings seal Master 1073.09	4.87	5.80
0870.900	Filter Carbon	43.26	51.90	1073.092	Drive unit, impeller f. 1073.09	35.78	42.90
0870.901	Filter carbon	4.70	5.60	1073.093	Impeller housing 1073.09	34.06	40.90
0870.950	Filter Carbon	27.16	32.60	1073.094	Ceramic shaft with holder	22.21	26.70
0871.000	Cartridge 871	14.77	17.70	1073.095	Hose adapter DN38, 1"1/2G	4.38	5.30
0872.000	Micro wadding, 10 x 60g (2.1 oz.)	23.93	28.70	1073.110	Silence PRO	251.87	302.20
0872.010	Micro Wadding, 60g (2.1oz.)	2.65	3.20	1073.111	3 O ring seals with stainless steel screws	5.34	6.40
0872.050	Micro wadding, 5kg (176 oz.) sack	50.77	60.90	1073.112	Drive unit	114.59	137.50
0873.000	Macro wadding, 10 x 250g (8.8 oz.)	38.90	46.70	1073.113	Impeller housing	30.91	37.10
0873.010	Macro Wadding, 250g (8.8oz.)	4.33	5.20	1073.114	Suction housing	22.94	27.50
0875.900	GRANOVIT	18.05	21.70	1073.115	1 hose connections D38, 1"1/2 G	11.22	13.50
0875.901	Granovit	2.19	2.60	1073.116	4 silicone cups	3.34	4.00
0875.950	Granovit	11.58	13.90	1073.200	Silicone hose, diam. .86 x 1.1 x 78.7 in.	26.91	32.30
0876.460.S	Branch connec.f.hose	3.04	3.60	1073.500	Hose,diam.25 x200mm	4.29	5.10
0878.710	Bio connection for 805	4.23	5.10	1073.600	Clamp	2.54	3.00
0879.710.S	Bio tube	2.75	3.30	1074.200	Cover	10.50	12.60
0879.711	Distribution nozzle	0.62	0.70	1074.300	Insulating foam	5.57	6.70
0880.900	Calcium carbonate	28.23	33.90	1074/2	Overflow Box	93.70	112.40
0880.901	Calcium carbonate	2.94	3.50	1075.050	Outlet hose a. clamp 1m/D.40mm	14.01	16.80
0880.950	Calcium carbonate	17.02	20.40	1075.500	Outlet filter	47.32	56.80
0900.000	Comline® Pump	21.95	26.30	1075/2	Outlet hose	31.68	38.00
0900.015	Motor block	14.84	17.80	1076.150	Protective grid	6.74	8.10
0900.110	Motor housing cover	3.30	4.00	1076.200	Cover	5.57	6.70
0900.130	Impeller cover	5.14	6.20	1076/2	Wall Overflow	79.19	95.00
0900.700	Drive unit	6.24	7.50	1077.000	Central Overflow	79.19	95.00
0900.790	Strainer	3.85	4.60	1077.100	Screw connection, pipe and hose	42.35	50.80
0910.000	Quickphos 750 ml (25 oz.)	15.79	18.90	1200.150	Bushing, outside diam. 25mm (.98 in.)	1.92	2.30
0920.000	Silphos 750 ml (25.4 oz.)	25.99	31.20	1201.130	Impeller housing	15.35	18.40
0930.000	Zeolite 750 ml (25 oz.)	10.81	13.00	1205.000	Turbelle® e-jet 1205	109.54	131.40
0940.000	Carbophos 750 ml (25.3 oz.)	14.25	17.10	1205.015	Motor block	50.00	60.00
0950.000	NanoChem 300ml (10oz.)	12.50	15.00	1205.700	Drive unit	21.56	25.90
1001.740	Overflow tube	15.70	18.80	1278.460	Union for hose, diam. 9x12mm (.35 x .47 in.)	5.42	6.50
1001.741	Glueing nipple D=7/11	0.81	1.00	1281.313	2 screw+2 nuts M6x16mm	1.56	1.90
1001.760	Pipe for Turbelle®	3.73	4.50	1282.150	Bushing - outside diam. 25mm (.98 in.)	2.64	3.20
1001.770	Flow deflector	2.25	2.70	1500.120	Impeller	4.19	5.00
1001.780	Bushing, diam. 21/25mm (.82/.98 in.)	1.48	1.80	1500.130	Impeller housing	15.35	18.40
1001.790	Strainer, 12cm (4.7 in.)	6.48	7.80	1560.060	Strainer	13.25	15.90
1001.800	T-piece	3.98	4.80	1572.200	Bubble counter	10.56	12.70
1002.120	Impeller	4.19	5.00	1600.000	Cartridge Filter 1600	20.36	24.40
1002.150	Reducer	1.52	1.80	1600.010	Filter cartridges, 225mm (8.8 in.)	11.03	13.20
1005.000	Turbelle® e-jet 1005	55.25	66.30	1600.030	Carbon floss cartridge, 225mm (8.8 in.), 1 pc.	5.95	7.10
1005.015	Motor block	32.02	38.40	1600.060	Strainer	11.62	13.90
1005.700	Drive unit	11.84	14.20	1605.000	Turbelle® e-jet 1605	67.94	81.50
1073.000	Inlet hose and fittings	58.83	70.60	1605.015	Motor block	33.59	40.30
1073.008	Recirculation Pump Silence	23.69	28.40	1605.700	Drive unit	13.83	16.60
1073.020	Recirculation Pump Silence	57.25	68.70	1652.790	Strainer, 17cm (6.6 in.)	8.81	10.60
1073.022	Cover with O ring seal	5.24	6.30	1670.000	Cartridge 1670	25.51	30.60
1073.023	Suction housing	6.68	8.00	1678.020	Bio filter ring 10p.	2.19	2.60



Total price list

Art. No.	Designation	Price £	VAT 20%	Art. No.	Designation	Price £	VAT 20%
1678.370	PVC hose - diam. .23 x .34 x 78.7 in. _____	2.57	3.10	3130.020	Cover with four slots _____	3.72	4.50
1678.380	PVC hose - diam. .23 x .34 x 393.6 in. _____	11.99	14.40	3130.130	Impeller housing w. nozzle f. Comline _____	29.59	35.50
1678.390	PVC hose - diam. 23 x .34 x 39.1 in. _____	1.75	2.10	3130.160	Nozzle _____	5.93	7.10
1691.100	Glass tank with cover Kit 16/21 _____	166.28	199.50	3130.165	Net bag 2 pieces _____	4.96	6.00
1891.100	Glass tank with cover Kit 18/18.7 _____	166.28	199.50	3130.250	Comline skimmer support _____	15.10	18.10
2002.000	Turbelle® classic 2002 _____	198.63	238.40	3130.340	Pressure pipe _____	1.94	2.30
2002.020	Cover _____	14.11	16.90	3130.360	M6 air regulating screw _____	1.35	1.60
2002.100	Motor housing _____	39.59	47.50	3130.482	2 hoses+ cap _____	7.49	9.00
2002.110	Motor with cable _____	72.37	86.80	3150.110	Switched Socket Outlet _____	44.07	52.90
2002.220	Rotor _____	22.96	27.60	3150.250	Support for sensor _____	8.21	9.90
2002.710	Bio connection for 2002, 4002 _____	8.92	10.70	3150.300	Sensor w.cinch plug _____	21.95	26.30
3000.020	O-ring seal, 78x2.5mm _____	1.33	1.60	3150.310	Holder board _____	1.58	1.90
3000.030	Cooling duct _____	3.12	3.70	3152.000	Osmolator® nano _____	63.71	76.50
3000.040	Upper bushing _____	1.08	1.30	3152.300	Sensor for 3152 _____	15.05	18.10
3000.050	Magnetic rotor _____	11.26	13.50	3152.630	Sensor housing _____	2.57	3.10
3000.070	Drive shaft _____	6.31	7.60	3155.000	Osmolator® _____	134.78	161.70
3000.080	Brake shoes 2 pcs. _____	2.15	2.60	3155.100	Sliding unit for sensor _____	2.37	2.80
3000.090	Brake shell + ring _____	6.35	7.60	3155.200	Sliding unit for level sensor _____	2.04	2.40
3000.092	Brake ring _____	1.10	1.30	3155.250	Support for Osmolator _____	18.47	22.20
3000.110	Clampring _____	2.10	2.50	3155.600	Magnet holder for two sensors _____	20.52	24.60
3000.120	Impeller _____	4.19	5.00	3155.610	Support for optical sensor _____	1.92	2.30
3000.130	Impeller housing _____	18.26	21.90	3155.630	Holder for floating switch _____	1.92	2.30
3000.220	Mounting bar _____	2.73	3.30	3162.000	Comline® Filter 3162 _____	47.97	57.60
3000.225	Elastic ground, 1 pair _____	0.48	0.60	3162.100	Housing _____	13.58	16.30
3000.230	Sliding unit _____	2.05	2.50	3162.120	Filter panel _____	7.80	9.40
3000.240	Clamp holder _____	4.46	5.40	3162.130	Intake lid _____	4.13	5.00
3000.243	Screw set _____	1.59	1.90	3162.140	Rear cover _____	3.30	4.00
3000.244	Holding device extension _____	2.88	3.50	3162.150	Intermediate plate _____	2.38	2.90
3000.245	Cable fastener _____	10.34	12.40	3162.160	Rear Plate _____	11.19	13.40
3000.250	Turbelle® holder _____	6.60	7.90	3162.170	Bottom plate _____	2.38	2.90
3000.260	Holding device extension _____	8.19	9.80	3162.200	Filter fleece _____	3.67	4.40
3000.261	Plate without thread _____	1.04	1.20	3162.300	Woven carbon filter medium _____	4.50	5.40
3000.264	2 screws M5x10mm _____	1.46	1.80	3162.500	Spacer for Magnet _____	3.12	3.70
3000.270	Adhesive attachment for holder _____	2.10	2.50	3162.760	Tube 19x108 mm _____	1.92	2.30
3000.280	Holding bracket _____	1.94	2.30	3163.000	Comline® Streamfilter 3163 _____	56.06	67.30
3000.300	Set 3000.07+3000.08 _____	7.37	8.80	3163.120	Streamfilter panel _____	7.80	9.40
3000.400	Set 3000.09+3000.10 _____	7.66	9.20	3163.200	Streamfilter pump _____	25.69	30.80
3000.500	Internal parts Turbelle® _____	22.71	27.30	3163.770	Flow deflector _____	1.97	2.40
3000.600	Drive unit _____	19.12	22.90	3165.080	Bottom lid for 3165, 9002 _____	2.64	3.20
3000.610	Upper bushing _____	1.08	1.30	3165.100	Nano Cleaner housing _____	28.34	34.00
3000.612	O-ring seal, 13x2.5mm _____	1.04	1.20	3165.400	Outlet pipe with flow deflector _____	3.44	4.10
3000.620	Bushing _____	3.08	3.70	3166.000	Comline filter _____	84.81	101.80
3000.630	Magnetic rotor _____	11.26	13.50	3166.020	Sliding cover _____	3.17	3.80
3000.640	Drive shaft _____	4.46	5.40	3166.050	Cap H7A, ø 19mm _____	1.04	1.20
3000.650	Bushing shell _____	3.08	3.70	3166.060	Cap black ø 9,5mm _____	1.04	1.20
3000.660	2 Brake shoes _____	1.37	1.60	3166.070	Retaining plate _____	3.17	3.80
3000.780	Bushing, diam. 25/28mm (.98 / 1.1 in.) _____	1.74	2.10	3166.100	Filter housing _____	41.19	49.40
3005.000	Turbelle® e-jet 3005 _____	95.42	114.50	3166.200	Comline bell compl. _____	20.66	24.80
3005.015	Motor block _____	42.74	51.30	3166.231	Sliding unit Comline holder right _____	2.05	2.50
3005.130	Motor block cover _____	2.05	2.50	3166.232	Sliding unit Comline holder left _____	2.05	2.50
3005.700	Drive unit _____	16.42	19.70	3166.250	Comline support _____	10.59	12.70
3005.740	Bushing and attenuation disk _____	1.52	1.80	3166.280	Pot with handle _____	14.78	17.70
3060.400	Bracket _____	2.37	2.80	3166.500	Comline filter _____	103.53	124.20
3060.410	Suction cup holder _____	4.36	5.20	3166.760	Tube 19x300 mm _____	3.73	4.50
3060.440	Suction bell 4 pcs. _____	1.69	2.00	3167.000	Comline double filter _____	127.52	153.00
3060.450	Silencer holder for old Turbelle® _____	10.52	12.60	3167.100	Filter housing _____	41.19	49.40
3060.460	Silencer holding device _____	10.52	12.60	3167.200	Comline bell complete for 3167 _____	20.66	24.80
3110.141	Skimmer cup 300 ml (10.1 f oz.) _____	9.31	11.20	3167.280	Pot with handle _____	14.78	17.70
3110.150	Skimmer cup lid _____	5.14	6.20	3167.500	Comline double filter _____	156.39	187.70
3110.310	Cover with slots _____	5.29	6.30	3170.000	Comline Calcium Automat _____	205.99	247.20
3110.480	Elbow for air hose 3110/9002 _____	1.69	2.00	3170.100	Housing of Calcium Automat _____	34.06	40.90
3115.480	Silencer with hose _____	7.49	9.00	3170.134	Connecting unit to 800.040 _____	12.21	14.70



Total price list

Art. No.	Designation	Price £	VAT 20%	Art. No.	Designation	Price £	VAT 20%
3170.135	Connecting unit to 1073.008	12.21	14.70	6025.130	Propeller housing	7.79	9.30
3170.200	Reactor of Calcium Automat	97.90	117.50	6025.200	Protective grating	6.33	7.60
3170.300	Reducing adapter and T piece	2.10	2.50	6025.250	Nanostream® Rock	33.35	40.00
3170.460	Y branch	4.02	4.80	6025.500	Magnet holder	25.87	31.00
3170.500	Calcium Automat Extension	84.81	101.80	6025.501	Magnet extension	15.53	18.60
3174.112	Screw cap and seal	5.29	6.30	6025.510	Clamp	5.35	6.40
3178.000	Mangrove Box	56.69	68.00	6025.512	Magnet holder	15.00	18.00
3178.500	Black mangrove	22.85	27.40	6025.515	Magnet holder	18.58	22.30
3178.710	Bio connection for 3005	8.17	9.80	6025.650	Silence Clamp Nanostream	7.54	9.00
3179.000	Bio-hydro-reactor	84.81	101.80	6025.700	Drive unit	7.79	9.30
3179.020	Sliding cover with cutout	3.17	3.80	6025.740	Disc for drive	0.97	1.20
3179.050	Filter mat	3.97	4.80	6045.000	Turbelle® nanostream® 6045	58.84	70.60
3179.100	Housing	34.06	40.90	6045.100	Motor block	28.95	34.70
3200.000	Cartridge Filter 3200	36.77	44.10	6045.110	Motor block	28.95	34.70
3200.520	Connector	12.03	14.40	6045.130	Propeller housing	9.25	11.10
4002.000	Turbelle® classic 4002	221.87	266.20	6045.131	Propeller housing	9.25	11.10
4002.020	Cover	16.21	19.50	6045.132	Blue regulating pipe	9.25	11.10
4002.060	Screw M 4x20 V2A	0.76	0.90	6055.000	Turbelle® nanostream® 6055	153.29	183.90
4002.070	Motor bearer 2 pcs.	4.06	4.90	6055.100	Motor block	82.72	99.30
4002.080	Retainer 10 pcs.	4.78	5.70	6055.240	Power supply unit 12-24V DC	28.23	33.90
4002.090	Fan	5.08	6.10	6055.241	6 Jumper in a bag for 6055.240	4.29	5.10
4002.100	Motor housing	39.55	47.50	6055.700	Drive unit for 6055	7.79	9.30
4002.110	Motor with cable	89.37	107.20	6055.740	Bushing and attenuation disk	1.52	1.80
4002.120	Rubber mount 4 pcs.	3.97	4.80	6060.120	Hydro propeller	7.87	9.40
4002.130	Shaft set	8.06	9.70	6060.250	Turbelle® holder	9.98	12.00
4002.131	Pinion with spring	3.97	4.80	6065.000	Turbelle® stream 6065	90.61	108.70
4002.200	Shaft housing	12.19	14.60	6065.100	Motor block	36.23	43.50
4002.202	Clamping ring	3.31	4.00	6065.130	Propeller housing	18.26	21.90
4002.203	Felt strip	1.00	1.20	6065.500	Magnet Holder	48.12	57.70
4002.220	Rotor	22.03	26.40	6065.510	Clamp	7.26	8.70
4002.250	Repair kit	12.12	14.50	6065.515	Magnet Holder	22.45	26.90
4002.260	Motor bearings 2pcs.	16.21	19.50	6065.520	Magnet Holder	48.12	57.70
4002.770	Flow deflector	3.66	4.40	6065.600	Magnet Holder Silence	55.33	66.40
4017.000	Controller Osmolator® nano	50.09	60.10	6065.620	Silicon buffer	2.29	2.70
5000.020	Metering pump	15.06	18.10	6065.650	Silence clamp	11.78	14.10
5000.150.S	Protective grid	6.22	7.50	6065.700	Drive unit	14.93	17.90
5000.240	Hose clamp	1.20	1.40	6065.701	Drive unit	12.64	15.20
5000.300	Sensor w.cinch plug	21.95	26.30	6065.709	Shaft for drive unit	5.39	6.50
5000.380	PVC hose - diam. .15 x .27 x 393.6 in.	9.39	11.30	6065.792	Disc for drive	0.97	1.20
5000.390	PVC hose - diam. .15 x .27 x 118.1 in.	3.29	3.90	6080.120	Hydro propeller	7.87	9.40
5001.390	Silicon hose - diam. 6x1,5mm x5m	12.00	14.40	6080.130	Suction housing	29.71	35.70
5002.100	Storage container 13L (3.4 USgal.)	7.13	8.60	6080.200	Protective grating	7.44	8.90
5002.250	Storage container 27L (7.1 USgal.)	13.57	16.30	6080.230	Sliding piece with hinge	3.85	4.60
5005.000	Turbelle® e-jet 5005	134.27	161.10	6080.250	Holder stabilizer	2.97	3.60
5005.015	Motor block	71.93	86.30	6080.400	Swivel arm	2.97	3.60
5012.010	Power supply unit 11V	12.67	15.20	6080.500	Magnet holder	38.61	46.30
5016.100	Velcro® strips 2x5,5cm (2.1 in.)	0.82	1.00	6080.520	Silence clamp	9.54	11.40
5017.000	Osmolator® Controller	100.29	120.30	6080.600	Drive unit	22.10	26.50
5020.250	Air adjust (chock)	1.28	1.50	6080.640	Drive shaft	5.45	6.50
5020.300	Sensor w. jack plug	21.95	26.30	6080.641	Screw M4x16	0.86	1.00
5024.020	Top cover for 5024,3165	2.64	3.20	6085.000	Turbelle® stream 6085	119.47	143.40
5024.040	Universal pump Mini 5024.04	11.51	13.80	6085.100	Motor block	61.51	73.80
5024.042	Drive unit for 5024.04	3.35	4.00	6085.700	Drive unit	17.33	20.80
5074.000	Calcium Dispenser	68.81	82.60	6085.701	Drive unit	15.04	18.00
5074.010	Non-return valve water	2.47	3.00	6095.000	Turbelle® nanostream® 6095	175.42	210.50
5074.500	Calcium hydroxide - 250 g (.55 lbs.)	7.63	9.20	6095.100	Motor block	87.50	105.00
6015.000	Turbelle® nanostream® 6015	25.76	30.90	6095.130	Propeller housing	9.26	11.10
6015.100	Motor block	15.74	18.90	6095.700	Drive unit	7.88	9.50
6015.500	Magnet holder	12.42	14.90	6100.120	Hydro propeller	7.87	9.40
6015.700	Drive unit	5.15	6.20	6100.700	Drive unit+ propeller	21.70	26.00
6025.000	Turbelle® nanostream® 6025	41.64	50.00	6105.000	Turbelle® stream 6105	209.13	251.00
6025.100	Motor block	20.98	25.20	6105.001	Turbelle® stream 6105 DC	218.09	261.70



Total price list

Art. No.	Designation	Price £	VAT 20%	Art. No.	Designation	Price £	VAT 20%
6105.100	Motor block _____	117.64	141.20	6508.130	Propeller housing _____	133.58	160.30
6105.240	Power supply unit 12-24V DC _____	37.96	45.60	6508.134	M6 screw set _____	11.84	14.20
6105.242	24 V jumper for 6105.240 _____	1.43	1.70	6508.500	Magnet Holder masterstream _____	191.20	229.40
6105.243	18 V jumper for 6105.240 _____	1.43	1.70	6508.600	Cable Safe masterstream _____	22.42	26.90
6105.244	12 V jumper for 6105.240 _____	1.43	1.70	6508.700	Drive unit _____	85.87	103.00
6105.500	Safety Connector _____	34.06	40.90	6508.750	Axle and accessories _____	35.12	42.10
6105.515	Magnet Holder _____	28.14	33.80	6512.100	Motor block _____	1431.24	1717.50
6105.600	Cable Safe _____	6.96	8.40	6512.120	12-14 VDC power supply unit _____	310.10	372.10
6105.700	Drive unit _____	19.55	23.50	6515.100	Motor block _____	1765.19	2118.20
6105.701	Drive unit _____	17.25	20.70	6515.101	O-ring seal 110 x 5mm _____	8.39	10.10
6125.000	Turbelle® stream 6125 _____	158.77	190.50	6515.240	24-28 VDC power supply unit _____	438.91	526.70
6125.100	Motor block _____	80.30	96.40	6515.245	Power Supply Box _____	397.88	477.50
6125.700	Drive unit _____	19.55	23.50	6515.246	DC pump cable 5 m (196.8 in.) _____	33.40	40.10
6125.701	Drive unit _____	17.25	20.70	6515.500	Safety Connector _____	113.55	136.30
6155.000	Turbelle® stream 6155 _____	364.02	436.80	6550.000	Turbelle® masterstream 6550 _____	994.23	1193.10
6155.001	Turbelle® stream 6155 DC _____	364.02	436.80	6560.000	Turbelle® masterstream 6560 _____	1829.67	2195.60
6155.100	Motor block _____	252.46	303.00	6560.001	Turbelle® masterstream 6560 DC _____	1697.71	2037.30
6200.120	Hydro propeller _____	7.87	9.40	6580.000	Turbelle® masterstream 6580 _____	2365.35	2838.40
6200.130	Suction housing _____	34.81	41.80	6580.001	Turbelle® masterstream 6580 DC _____	2126.81	2552.20
6200.230	Sliding piece + screw _____	3.85	4.60	7005.140	Calibration solution 600 µS/cm _____	5.08	6.10
6200.250	Stream Rock _____	48.72	58.50	7008.000	Reef Excel® Lab Marine Salt, 8kg _____	21.67	26.00
6200.500	Magnet holder. _____	54.42	65.30	7008.100	Reef Excel® Lab Marine Salt, 2kg _____	6.72	8.10
6200.509	9 elastic pads for Magnet Holder _____	2.10	2.50	7008.200	Reef Excel® Lab Marine Salt, 16 kg _____	44.96	54.00
6200.700	Drive unit + propeller _____	29.02	34.80	7008.300	Reef Excel® Lab Marine Salt, 10 x 2kg _____	67.22	80.70
6205.100	Motor block _____	172.03	206.40	7008.400	Reef Excel® lab marine salt, 4 x 8kg _____	86.67	104.00
6205.130	Propeller housing _____	22.01	26.40	7008.500	Reef Excel® lab marine salt, 20kg _____	51.49	61.80
6205.200	Protective grating _____	8.39	10.10	7010.000	Reef Excel® Lab nitrate test _____	25.03	30.00
6205.500	Magnet Holder _____	73.32	88.00	7011/2	Reef Excel® Lab nitrate test _____	42.32	50.80
6205.501	Magnet extension _____	39.02	46.80	7012/2	Reef Excel® Lab nitrite test _____	69.35	83.20
6205.600	Magnet Holder Silence _____	88.83	106.60	7013.000	Reef Excel® Lab hardness test _____	37.66	45.20
6205.700	Drive unit _____	27.15	32.60	7014/2	Reef Excel® Lab carbonate test _____	43.67	52.40
6205.701	Drive unit _____	24.85	29.80	7015/2	Reef Excel® Lab calcium test _____	58.05	69.70
6206.100	Nano Wavebox housing _____	36.35	43.60	7016.000	Reef Excel® Lab phosphate test _____	47.67	57.20
6206.200	Nano Wavebox pump _____	101.81	122.20	7016.500	Reef Excel® Lab phosphate test _____	88.28	105.90
6208.000	Comline® Wavebox _____	217.41	260.90	7017/2	Reef Excel® Lab ammonium test _____	47.73	57.30
6208.130	Wavebox lid _____	4.13	5.00	7019/2	Reef Excel® Lab iron test _____	43.45	52.10
6208.200	Wavebox pump _____	97.80	117.40	7020/2	Reef Excel® Lab hardness test _____	38.92	46.70
6208.512	Magnet holder _____	15.97	19.20	7028.900	TUNZE® Aquawind _____	50.60	60.70
6212.020	Cover with twelve slots _____	3.72	4.50	7028.902	Power supply unit _____	25.01	30.00
6212.070	Retaining plate _____	14.72	17.70	7028/3	Temperature Controller Set °C _____	161.90	194.30
6212.200	Protective grating _____	7.44	8.90	7028/3_A	Temperature controller set °F _____	161.90	194.30
6212.300	Sponge-ring _____	7.27	8.70	7030.140	Calibration solution 50 mS/cm _____	5.08	6.10
6215.000	Wavebox _____	336.55	403.90	7040.120	Buffer solution for pH 7 and 9 _____	8.31	10.00
6215.015	Motor block _____	194.65	233.60	7040.130	Buffer solution for pH 5 and 7 _____	8.49	10.20
6215.100	Wavebox housing _____	52.48	63.00	7040.140	Buffer set pH 5/7/9 _____	14.03	16.80
6215.200	Wavebox pump _____	209.92	251.90	7040.200	Cleaning solution _____	5.08	6.10
6215.300	Foam-rubber pan _____	5.84	7.00	7040.400	3 m KCl solution 50ml _____	4.39	5.30
6215.500	Wavebox extension _____	300.09	360.10	7055.100	mV Electrode _____	118.77	142.50
6250.510	O-ring seal 50x6 mm _____	4.27	5.10	7070.010	CO2 non-return valve _____	9.01	10.80
6255.000	Turbelle® stream 6255 _____	440.99	529.20	7070.012	Glue-in nipple for hose, diam. .15x.23 in. _____	0.83	1.00
6255.100	Motor block _____	306.61	367.90	7070.015	Glue-in nipple 30° for hose, diam. .15 x .23 in. _____	0.83	1.00
6255.130	Propeller housing _____	32.48	39.00	7070.100	pH Electrode 7070.10 _____	63.21	75.90
6255.701	Drive unit _____	35.87	43.00	7070.110	pH Electrode 7070.11 _____	70.80	85.00
6300.130	Suction housing ø63mm _____	48.10	57.70	7070.250	Wall holder _____	4.11	4.90
6300.240	Power supply unit 24 VDC _____	121.65	146.00	7070/2	pH controller _____	213.58	256.30
6300.700	Drive unit + propeller _____	36.69	44.00	7071/2	mV controller _____	242.92	291.50
6305.100	Motor block _____	269.49	323.40	7072.200	Silicon hose - diam. 4x1,5mm x5m _____	12.00	14.40
6305.130	Propeller housing _____	38.56	46.30	7072.300	PVC hose - diam. .15 x .23 x 196.8 in. _____	3.71	4.50
6305.700	Drive unit _____	27.15	32.60	7074.110	CO2 Valve Set _____	89.74	107.70
6305.701	Drive unit _____	24.85	29.80	7074.400	12V solenoid valve _____	65.36	78.40
6508.100	Motor block _____	639.29	767.10	7074.500	CO2 diffuser _____	28.56	34.30
6508.120	12 VDC power supply unit _____	204.76	245.70	7074/2	pH/CO2 controller set _____	296.14	355.40



Total price list

Art. No.	Designation	Price £	VAT 20%	Art. No.	Designation	Price £	VAT 20%
7075.120	Switched socket outlet	72.52	87.00	8104.000	T8 reflector, tube L 90 cm (35.4 in.), 30 W	14.05	16.90
7075/2	mV Controller Set	304.64	365.60	8105.000	T8 reflector, tube L 120 cm (47.2 in.), 36 W	16.07	19.30
7077.110	Press. gauche 7077/3 0-250 bar	12.90	15.50	8107.000	T8 reflector, tube L 150 cm (59.06 in.), 58 W	18.77	22.50
7077.150	Seal ring for 7077.100	1.04	1.20	8107.010	2 tube brackets, diam. 26 mm (1.02 in.)	3.33	4.00
7077.210	Fine adjustment valve 7077/3	12.39	14.90	8108.000	T12 reflector, tube L 150 cm (59 in.), 140 W	18.37	22.00
7077.300	Seal ring for 7077/2	2.64	3.20	8108.010	2 tube brackets, diam. 38 mm (1.49 in.)	4.59	5.50
7077.310	Seal ring for 7077/3	2.64	3.20	8110.000	T5 reflector, tube L 54.9 cm (21.6 in.), 24 W	11.40	13.70
7077/3	Pressure reducer	68.66	82.40	8110.010	2 tube brackets, diam. 16 mm (.62 in.)	2.97	3.60
7079.150	CO2 cylinder - 1.5 kg (3.3 lbs.)	104.96	126.00	8111.000	T5 reflector, tube L 84.9 cm (33.4 in.), 39 W	13.28	15.90
7079.200	CO2 cylinder - 2.0 kg (4.4 lbs.)	109.25	131.10	8112.000	T5 reflector, tube L 114.9 cm (45.2 in.), 54 W	13.91	16.70
7080.000	Theben-timer 7080	26.71	32.10	8114.000	T5 reflector, tube L 144.9 cm (57.05 in.), 80 W	17.00	20.40
7092.000	Wavecontroller	51.22	61.50	8230.000	T8 built-in illuminator - ~ 38.3 in., 2x30 W	88.25	105.90
7092.300	Cable 1,2m Multicontroller	12.01	14.40	8236.000	T8 built-in illuminator - ~ 50.3 in., 2x36 W	105.03	126.00
7092.340	Y adapter	36.11	43.30	8322.000	T5 built-in illuminator - ~ 31.4 in., 2x24 W	122.94	147.50
7094.050	Photo-electric cell	11.38	13.70	8323.000	T5 built-in illuminator - ~ 39.3 in., 2x39 W	128.26	153.90
7094.400	Pump adapter	72.13	86.60	8325.000	T5 built-in illuminator - ~ 49.6 in., 2x54 W	136.41	163.70
7095.000	Multicontroller	182.28	218.70	8328.000	T5 built-in illuminator - ~ 61.4 in., 2x80 W	206.18	247.40
7095.050	Photo-electric cell for 7095	15.05	18.10	8460.000	Lamp - Design 8460	352.29	422.70
7095.051	Cable clamp 3mm	1.20	1.40	8465.000	Lamp - Design 8465	437.96	525.60
7096.000	Multicontroller	110.65	132.80	8480.000	Lamp - Extension 8480	808.47	970.20
7096.600	TUNZE Safeguard	47.80	57.40	8480.002	External Controller 250W,230V/50Hz	240.42	288.50
7200.600	Drive unit	19.50	23.40	8480.004	External Controller 400W,230V/50Hz	263.47	316.20
7400.610	O-ring seal red	1.04	1.20	8490.000	Lamp - Extension 8490	838.26	1005.90
7410.120	Impeller	4.19	5.00	8515.000	Nano RO station	77.69	93.20
7607/2	Water level alarm	130.70	156.80	8515.070	Preliminary filter with O-ring seal	9.54	11.40
8001.000	T8 Osram Lumilux 11 - L 17.3 in., 15 W	8.69	10.40	8515.080	Carbon Block O-ring seal	2.38	2.90
8002.000	T8 Osram Lumilux 11 - L 23.3 in., 18 W	6.34	7.60	8515.120	Carbon Block Filter	6.93	8.30
8003.000	T8 Osram Lumilux 11 - L 35.4 in., 30 W	9.61	11.50	8515.500	Thin-film composite membrane	44.89	53.90
8004.000	T8 Osram Lumilux11 - L 47.2 in., 36 W	5.81	7.00	8515.520	Capillary for 8515	12.47	15.00
8005.000	T8 Osram Lumilux11 - L 59 in., 58 W	9.72	11.70	8515.701	Metric adapter	6.84	8.20
8006.000	T8 Osram blue 67 - L 23.3 in., 18 W	12.36	14.80	8515.702	Angle for RO tube	4.68	5.60
8007.000	T8 Osram blue 67 - L 35.4 in., 30 W	14.68	17.60	8522.120	Sediment filter 5µm	8.08	9.70
8008.000	T8 Osram blue 67 - L 47.2 in., 36 W	16.78	20.10	8532.010	1/4" nylon nipple	3.72	4.50
8009.000	T8 Osram blue 67 - L 59 in., 58 W	12.81	15.40	8532.020	1/4 in. elbow for reverse osmosis hose	3.76	4.50
8016.000	T12 Philips Aqua Coral - L 47.2 in., 40 W	25.27	30.30	8532.021	Clamp for RO connection	1.04	1.20
8018.000	T12 Philips Aqua Coral - L 23.3 in., 40 W	29.02	34.80	8532.030	1/8 in. elbow for reverse osmosis hose	4.21	5.10
8020.000	T12 Philips Aqua Coral - L 159 in., 140 W	36.53	43.80	8532.040	1/8 in. junction for hose 6.3 mm (.24 in.)	4.68	5.60
8040.000	HQI bulb 70W/D, 5,200 K, RX7s	39.33	47.20	8532.050	Pressure gauge 1/8"	11.64	14.00
8041.000	HIT bulb 70W, 10,000 K, RX7s	63.30	76.00	8532.060	Screw 3,2x17mm Kogapur	0.21	0.30
8041.100	HIT bulb 70W, blue, >15 K, RX7s	54.13	65.00	8532.070	O-ring seal for membrane housing	2.15	2.60
8042.000	HQI bulb 150W/D, 5,200 K, RX7s	42.88	51.50	8532.080	O-ring seal for filter housing	3.68	4.40
8043.000	HIT bulb 150W, 10,000 K, RX7s	47.63	57.20	8533.000	RO TDS Monitor	60.70	72.80
8043.070	HIT bulb 150W, 14,000 K, RX7s	86.39	103.70	8533.100	T-piece	6.01	7.20
8043.100	HIT bulb 150W, blue, >15K, RX7s	73.77	88.50	8550.000	RO station	158.05	189.70
8043.500	HIT bulb 175W, 10,000 K, E40/39	98.84	118.60	8550.010	Wrench for 8550	4.68	5.60
8044.000	HQI bulb 250W/D, 5,200 K, Fc2/18	84.19	101.00	8550.020	1/4 in. junction for reverse osmosis hose	3.45	4.10
8045.000	HIT bulb 250W, 10,000 K, Fc2/18	54.64	65.60	8550.030	T-piece for RO Station 8550	5.41	6.50
8045.070	HIT bulb 250W, 14,000 K, Fc2/18	100.41	120.50	8550.090	1/4" connector with RO pipe	4.93	5.90
8046.000	HQI bulb 250W, blue, E40	135.60	162.70	8550.100	Carbon sediment filter 1 µm	9.76	11.70
8048.000	HQI bulb 250W, 10,000 K, E40	105.35	126.40	8550.120	Sediment filter 20 µm	6.92	8.30
8049.000	HQI bulb 400W, blue, E40	101.87	122.20	8550.501	Mixed Bed Ion Exchanger	14.60	17.50
8062.000	T5 Osram Daylight - L 21.6 in., 24 W	7.47	9.00	8550.510	Spare membrane for 8550	64.04	76.80
8063.000	T5 Osram Daylight - L 33.4 in., 39 W	7.47	9.00	8550.530	Capillary for 8550	4.34	5.20
8065.000	T5 Osram Daylight - L 45.2 in., 54 W	7.84	9.40	8550.600	RO Ion Exchanger	36.55	43.90
8068.000	T5 Osram Daylight - L 57 in., 80 W	8.90	10.70	8550.602	Clip for 8550.600	5.46	6.60
8072.000	T5 Narva blue 2 - L 21.6 in., 24 W	23.85	28.60	8550.700	RO permeate pump	75.38	90.50
8073.000	T5 Narva blue 2 - L 33.4 in., 39 W	26.53	31.80	8555.000	RO water controller	133.54	160.20
8075.000	T5 Narva blue 2 - L 45.2 in., 54 W	28.12	33.70	8555.100	Controller 8555	61.47	73.80
8078.000	T5 Narva blue 2 - L 57 in., 80 W	30.79	36.90	8555.200	Water valve	56.30	67.60
8101.000	T8 reflector, tube L 17.3 in., 15 W	9.00	10.80	8556.000	Reverse osmosis pressure hose /1m	2.66	3.20
8102.000	T8 reflector, tube L 23.2 in., 18 W	10.30	12.40	8557.000	3/4 in. screw connection	11.96	14.40
8103.000	T12 reflector, tube L 23.2 in., 40 W	10.24	12.30	8810.000	TUNZE LED marine	110.93	133.10

TUNZE Total price list

Art. No.	Designation	Price £	VAT 20%	Art. No.	Designation	Price £	VAT 20%
8820.000	TUNZE LED white _____	110.93	133.10	9420.046	Cooling duct _____	3.06	3.70
8830.000	TUNZE LED blue _____	110.93	133.10	9420.047	Drive unit with bushing _____	35.04	42.00
9002.000	DOC Skimmer 9002 _____	85.87	103.00	9420.048	Silencer with hose _____	7.44	8.90
9002.030	Upper lid _____	6.34	7.60	9420.211	Skimmer cup _____	93.26	111.90
9002.100	Housing for 9002 _____	35.59	42.70	9420.231	Skimmer cup lid _____	57.74	69.30
9002.250	Nano holder _____	8.09	9.70	9420.250	Disc _____	13.91	16.70
9002.400	Outlet pipe with nozzle _____	10.49	12.60	9420.260	Angle 90 deg. _____	7.54	9.00
9004.000	DOC Skimmer 9004 _____	98.58	118.30	9420.300	Outlet pipe 220 mm (9 in.) _____	4.83	5.80
9004.015	Motor block _____	13.58	16.30	9420.380	Outlet fleece, 1 ea. _____	3.06	3.70
9004.040	Comline® Foamer _____	24.59	29.50	9420.400	Booster-Ring _____	2.19	2.60
9004.042	Impeller cover _____	5.78	6.90	9430.000	DOC Skimmer 9430 _____	420.95	505.10
9004.047	Drive unit _____	7.89	9.50	9430.040	Hydrofoamer Silence _____	150.74	180.90
9004.120	Skimmer panel _____	7.80	9.40	9430.041	Motor block with screw _____	80.74	96.90
9004.130	Upper plate _____	3.85	4.60	9430.042	Cover with O ring seal and nozzle _____	12.56	15.10
9004.140	Skimmer cup _____	6.24	7.50	9430.047	Drive unit with bushing _____	38.25	45.90
9004.150	Skimmer cup cover _____	3.49	4.20	9430.048	Silencer with hose _____	7.44	8.90
9004.160	Skimmer plate _____	9.26	11.10	9430.241	Housing _____	130.28	156.30
9004.170	Bottom plate _____	2.38	2.90	9430.300	Outlet pipe 190 mm _____	4.37	5.20
9005.140	Skimmer cup _____	37.55	45.10	9440.300	Outlet pipe 120 mm (4.7 in.) _____	3.27	3.90
9005.400	DOC skimmer extension set _____	34.75	41.70	9460.211	Skimmer cup _____	286.25	343.50
9006.000	DOC Skimmer 9006. _____	183.62	220.30	9460.231	Skimmer cup lid _____	83.84	100.60
9006.015	Motor block _____	36.64	44.00	9460.241	Housing _____	494.80	593.80
9006.040	Hydrofoamer e-jet _____	67.86	81.40	9460.250	Disc _____	26.73	32.10
9010.100	Housing _____	82.35	98.80	9460.300	Outlet pipe 280 mm (11 in.) _____	5.56	6.70
9010.200	Cover for aspirator _____	7.56	9.10	9480.000	Master DOC Skimmer 9480 _____	898.19	1077.80
9010.300	Cover with sliding cover _____	7.96	9.60	9480.300	Outlet pipe 240 mm (9.4 in.) _____	5.01	6.00
9010.350	Cap with cover _____	3.49	4.20	TS24	Turbelle® stream Kit TS24 _____	637.16	764.60
9010.360	Air regulator screw M8 _____	1.46	1.80	TS48	Turbelle® stream Kit TS48 _____	1092.04	1310.40
9010.400	Sleeve below cover _____	7.56	9.10	END			
9010.700	Tube with bushing _____	15.86	19.00				
9011.000	DOC Skimmer 9011. _____	234.13	281.00				
9011.015	Motor block _____	63.17	75.80				
9011.040	Hydrofoamer e-jet _____	109.54	131.40				
9011.740	Bushing and attenuation disk _____	1.52	1.80				
9015.140	Skimmer cup _____	79.71	95.70				
9016.000	DOC Skimmer 9016. _____	312.71	375.30				
9020.140	Foam extraction unit _____	71.98	86.40				
9021.000	DOC Skimmer 9021. _____	366.98	440.40				
9206.000	DOC Skimmer 9206. _____	183.62	220.30				
9211.000	DOC Skimmer 9211. _____	232.53	279.00				
9400.048	Silencer with hose _____	7.44	8.90				
9410.000	DOC Skimmer 9410 _____	221.27	265.50				
9410.040	Hydrofoamer Silence _____	102.63	123.20				
9410.041	Motor block with screw _____	62.50	75.00				
9410.042	Cover with O ring seal and nozzle _____	10.72	12.90				
9410.046	Ceramic bearings, 1 ea. _____	5.49	6.60				
9410.047	Drive unit with bushing _____	33.95	40.70				
9410.048	Silencer with hose _____	7.44	8.90				
9410.200	Post-filter bag _____	10.15	12.20				
9410.241	Housing _____	76.57	91.90				
9410.250	Disc _____	10.10	12.10				
9410.300	Outlet pipe 155mm (6.1 in.) _____	3.63	4.40				
9410.400	Adapter ring for 9410. _____	2.19	2.60				
9410.500	Post-filter _____	22.13	26.60				
9415.000	DOC Skimmer 9415 _____	367.28	440.70				
9415.241	Housing _____	111.93	134.30				
9415.300	Outlet pipe 150 mm _____	3.91	4.70				
9420.040	Hydrofoamer Silence _____	126.68	152.00				
9420.041	Motor block with screw _____	71.56	85.90				
9420.042	Cover with O ring seal and nozzle _____	11.64	14.00				
9420.043	Screw for Motor block _____	1.10	1.30				
9420.045	Hose clip _____	3.62	4.30				