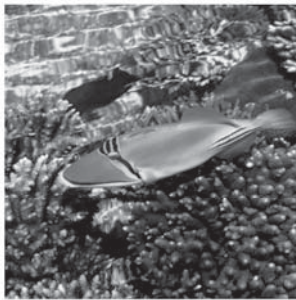
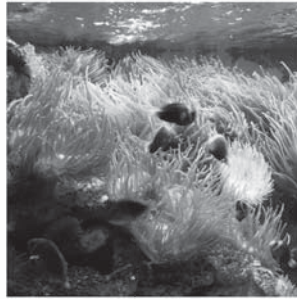
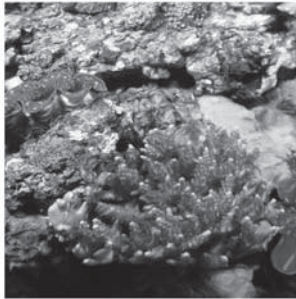


Total price list



TUNZE[®]

**High-Tech
Aquarium Ecology**



For USA
TUNZE USA LLC
305 Victor St
Austin TX 78753
Telephone: +1 (512) 833-7546
Telefax: +1 (512) 832-6082
www.tunze.com

For Canada
XENIA NORTH AMERICA INC.
6417 Papineau
Montreal
Quebec H26 2X1
Telephone: +1 (514) 721 7445
Telefax: +1 (514) 722 3679

01/2014



TUNZE Total price list

The deliveries are made in compliance with our respectively applicable terms of delivery and payment. Prices in US \$.
Valid as from January 01, 2014. Subject to alterations. Any Exchange Rate fluctuations may cause price differences.

Art. No.	Designation	Net sales price \$	Art. No.	Designation	Net sales price \$
0015.000	Skimmer Kit 15	724.89	0220.550	Power Magnet 220.55	139.84
0016.000	Compact Kit 16	1058.10	0220.558	Felt on the outside, 77 x 59mm (3.03 x 2.3 in.)	4.59
0018.000	Compact Kit 18	1821.68	0220.560	Power Magnet 220.56	261.20
0018.700	Compact Kit 18.7	2012.96	0220.568	Fleece for acrylic panes	1.71
0068.000	Calcium Dispenser Kit 68	341.63	0220.570	Power Magnet 220.57	560.04
0075.000	Kit 75	1055.25	0220.571	Rough surface, 115 x 77mm (4.5 x 3.0 in.)	7.00
0079.000	Kit 79	766.16	0220.572	Felt on the outside, 115 x 77mm (4.5 x 3.03 in.)	11.52
0085.000_A	Saltwater Aquarium	15.73	0220.700	Cleaning set	66.74
0090.000	TUNZE catalogue - German / €	3.61	0220.701	1/8" Brush	6.45
0090.000_A	TUNZE catalogue - English / \$US	3.61	0220.702	1/4" Brush	3.93
0090.000_C	TUNZE catalogue Czech / €	3.61	0220.703	3/4" Brush	4.67
0090.000_E	TUNZE catalogue - English	3.61	0220.704	Bottle brush	6.16
0090.000_F	TUNZE catalogue - French / €	3.61	0220.705	Bristle brush	2.96
0090.000_G	TUNZE catalogue - English / £	3.61	0220.706	TUNZE towel	13.54
0090.000_H	TUNZE catalogue - Hungarian / €	3.61	0220.707	Pick tool	4.38
0090.000_I	TUNZE catalogue - Italian / €	3.61	0220.708	Screwdriver	8.18
0090.000_O	TUNZE catalogue Portuguese / €	3.61	0220.709	Instructional DVD	9.98
0090.000_P	TUNZE catalogue - Polish / €	3.61	0220.710	Citric acid	9.64
0090.000_R	TUNZE catalogue - Russian	3.61	0220.711	Squirt applicator	4.17
0090.000_S	TUNZE catalogue Spanish / €	3.61	0220.712	Towel	12.05
0094.100	TUNZE® mug	11.91	0230.050	Disc	14.00
0097.000	DVD: TUNZE Aquarientechnik GmbH	12.25	0230.101	Screw M5x6mm, white	2.10
0097.500	DVD: TUNZE Introduces (PAL)	12.25	0230.250	Skimmer support	15.39
0097.500_A	DVD: TUNZE Introduces NTSC	12.81	0230.252	2 screw+2 nuts M6x25mm	2.55
0102.400	Universal clamp V4A	17.76	0230.350	Pressure pipe	3.03
0102.404	Screw knob	1.35	0230.490	Silencer w.air hose	11.69
0102.407	Disc	1.49	0230.550	Pump support	23.05
0102.410	Mounting bracket	10.10	0230.660	Skimmer casing	63.89
0102.430	Screw M6x12 V4A	1.12	0233.120	Impeller	10.63
0102.450	Mounting clamp	10.70	0235.120	HP Impeller	10.63
0104.190	Screw M3x10 V2A	1.04	0235.135	Nozzle	7.81
0104.250	Repair kit	7.56	0235.140	2 clips	4.27
0104.720	Silicone, 50 ml (1.7 oz.)	6.87	0235.481	Cap H14, ø 26mm	1.63
0104.730	Instant adhesive	7.72	0235.484	Cap	1.63
0104.740	Coral Gum, 112 g (4 oz.)	13.44	0240.484	Reducing adaptor for hose	1.29
0104.750	Coral Gum instant, 120 g (4.23 oz.)	22.32	0250.000	Comline® Reefpack 250	213.96
0104.760	Coral Gum instant, 400g (14.11oz.)	49.12	0300.000	Cartridge Filter 300	13.65
0104.790	Strainer, 7cm (2.7 in.)	7.83	0300.020	Filter cartridges, 75mm (2.9 in.)	18.06
0110.090	Fan	3.06	0300.060	Stainer	4.70
0110.130	Shaft with pinion	6.54	0312.344	Glue-in nipple for hose, diam. 9mm (.35 in.)	1.25
0110.140	Thrust washer	2.47	0320.000	Pot Filter 320	26.56
0110.260	Motor bearing	16.01	0320.260	Strainer	4.48
0121.131	Shaft	6.41	0370.000	Cartridge 370	17.12
0121.160	Impeller housing	31.71	0390.040	Union for hose, diam. 6x9mm (.23 x .35 in.)	1.08
0121.170	Impeller	11.06	0390.460	Y branch	5.30
0141.140	Thrust washer, 2 pcs.	4.97	0505.000	Reefpack 505	644.75
0141.150	Impeller bushing, 2 pcs.	7.17	0505.110	O-ring seal	1.80
0141.160	Impeller housing	31.71	0602.120	Impeller	6.54
0141.170	Impeller	13.50	0605.000	Riverpack 605	372.41
0141.180	Intake fitting	13.60	0800.000	Cartridge Filter 800	21.03
0210.049	Suction cups 4 pcs.	4.31	0800.010	Filter cartridges, 135mm (5.3 in.)	12.42
0214.150	Skimmer cup lid	17.12	0800.030	Carbon floss cartridge, 135mm (5.3 in.), 1 pc.	5.21
0220.140	Skimmer cup	58.58	0800.040	Nano pump	47.76
0220.400	Aquarium tongs	30.88	0800.042	Drive unit for 800.04 (50 Hz)	9.29
0220.430	Hole cap ø 26mm	2.44	0800.043	Cover on impeller housing	6.06
0220.500	Brush Set	16.46	0800.047	Outlet pipe, diam. 13 mm (.51in.)	3.65
0220.510	Protective gloves	7.17	0800.048	Pump cover	6.41
0220.521	Rough surface, 77 x 59mm (3.0 x 2.3 in.)	2.89	0800.060	Strainer	8.88
0220.526	Pile fabric surface, 77 x 5 mm (3.03 x 2.3 in.)	1.99	0800.070	Screw cap for PAF	4.32
0220.530	Power Magnet 220.53	21.16	0800.080	Bracket	4.95
0220.540	Power Magnet 220.54	39.89	0800.140	Foam cartridge	4.17



Total price list

Art. No.	Designation	Net sales price \$	Art. No.	Designation	Net sales price \$
0800.220	Cartridge filter mat	2.81	1073.024	Housing locking bar	9.01
0805.000	Turbelle® e-jet 805	105.84	1073.025	4 suction cups + 2 hose supports	10.73
0805.015	Motor block	56.26	1073.027	Drive unit with bushing	26.04
0805.700	Drive unit	22.93	1073.040	Recirculation Pump Silence	150.54
0808.100	TS mounting bar - 97 cm (38.1 in.)	20.79	1073.041	Screw cap 3/4 in., 10 bar (145 psi)	4.55
0820.000	Pot Filter 820	35.68	1073.042	Drive unit for 1073.03/04 old	29.83
0820.250	Cover f. F320/820	8.03	1073.044	Screwed socket with O ring seal	6.06
0820.260	Strainer	8.88	1073.047	Drive unit with bushing	62.50
0820.280	Pot for 820	20.37	1073.050	Recirculation pump Silence electronic	227.88
0820.290	Return stop	2.48	1073.082	Cover with O ring seal	7.74
0850.100.S	TS bell compl.	30.85	1073.083	Suction housing	9.23
0851.320.S	Adapter	3.23	1073.084	Housing locking bar	7.88
0870.000	Cartridge 870	23.09	1073.085	4 suction cups + 2 hose supports	5.88
0870.010	Bio cartridge	13.50	1073.087	Drive unit with shaft	10.78
0870.020	Cover for 870/1670	2.09	1073.091	3 O-rings seal Master 1073.09	7.59
0870.900	Filter Carbon	67.48	1073.092	Drive unit, impeller f. 1073.09	55.81
0870.901	Filter carbon	7.32	1073.093	Impeller housing 1073.09	53.13
0870.950	Filter Carbon	42.37	1073.094	Ceramic shaft with holder	34.64
0871.000	Cartridge 871	23.04	1073.095	Hose adapter DN38, 1"1/2G	6.83
0872.000	Micro wadding, 10 x 60g (2.1 oz.)	37.32	1073.110	Silence PRO	392.87
0872.010	Micro Wadding, 60g (2.1oz.)	4.14	1073.111	3 O ring seals with stainless steel screws	8.33
0872.050	Micro wadding, 5kg (176 oz.) sack	79.19	1073.112	Drive unit	178.74
0873.000	Macro wadding, 10 x 250g (8.8 oz.)	60.68	1073.113	Impeller housing	48.22
0873.010	Macro Wadding, 250g (8.8oz.)	6.75	1073.114	Suction housing	35.78
0875.900	GRANOVIT	28.16	1073.115	1 hose connections D38, 1"1/2 G	17.50
0875.901	Granovit	3.42	1073.116	4 silicone cups	5.21
0875.950	Granovit	18.06	1073.200	Silicone hose, diam. .86 x 1.1 x 78.7 in.	41.98
0876.460.S	Branch connec.f.hose	4.74	1073.500	Hose,diam.25 x200mm	6.69
0878.710	Bio connection for 805	6.59	1073.600	Clamp	3.96
0879.710.S	Bio tube	4.29	1074.200	Cover	16.37
0879.711	Distribution nozzle	0.97	1074.300	Insulating foam	8.68
0880.900	Calcium carbonate	44.03	1074/2	Overflow Box	146.15
0880.901	Calcium carbonate	4.59	1075.050	Outlet hose a. clamp 1m/D.40mm	21.86
0880.950	Calcium carbonate	26.54	1075.500	Outlet filter	73.81
0900.000	Comline® Pump	34.23	1075/2	Outlet hose	49.41
0900.015	Motor block	23.15	1076.150	Protective grid	10.51
0900.110	Motor housing cover	5.15	1076.200	Cover	8.68
0900.130	Impeller cover	8.01	1076/2	Wall Overflow	123.52
0900.700	Drive unit	9.74	1077.000	Central Overflow	123.52
0900.790	Strainer	6.00	1077.100	Screw connection, pipe and hose	66.05
0910.000	Quickphos 750 ml (25 oz.)	24.64	1200.150	Bushing, outside diam. 25mm (.98 in.)	3.00
0920.000	Silphos 750 ml (25.4 oz.)	40.53	1201.130	Impeller housing	23.95
0930.000	Zeolite 750 ml (25 oz.)	16.86	1205.000	Turbelle® e-jet 1205	170.86
0940.000	Carbophos 750 ml (25.3 oz.)	22.22	1205.015	Motor block	77.99
0950.000	NanoChem 300ml (10oz.)	19.50	1205.700	Drive unit	33.63
1001.740	Overflow tube	24.48	1278.460	Union for hose, diam. 9x12mm (.35 x .47 in.)	8.46
1001.741	Glueing nipple D=7/11	1.26	1281.313	2 screw+2 nuts M6x16mm	2.43
1001.760	Pipe for Turbelle®	5.82	1282.150	Bushing - outside diam. 25mm (.98 in.)	4.11
1001.770	Flow deflector	3.51	1500.120	Impeller	6.54
1001.780	Bushing, diam. 21/25mm (.82/.98 in.)	2.30	1500.130	Impeller housing	23.95
1001.790	Strainer, 12cm (4.7 in.)	10.10	1560.060	Strainer	20.67
1001.800	T-piece	6.22	1572.200	Bubble counter	16.47
1002.120	Impeller	6.54	1600.000	Cartridge Filter 1600	31.76
1002.150	Reducer	2.37	1600.010	Filter cartridges, 225mm (8.8 in.)	17.20
1005.000	Turbelle® e-jet 1005	86.17	1600.030	Carbon floss cartridge, 225mm (8.8 in.), 1 pc.	9.29
1005.015	Motor block	49.95	1600.060	Strainer	18.13
1005.700	Drive unit	18.46	1605.000	Turbelle® e-jet 1605	105.97
1073.000	Inlet hose and fittings	91.76	1605.015	Motor block	52.39
1073.008	Recirculation Pump Silence	36.96	1605.700	Drive unit	21.58
1073.020	Recirculation Pump Silence	89.30	1652.790	Strainer, 17cm (6.6 in.)	13.74
1073.022	Cover with O ring seal	8.18	1670.000	Cartridge 1670	39.79
1073.023	Suction housing	10.42	1678.020	Bio filter ring 10p.	3.42



Total price list

Art. No.	Designation	Net sales price \$	Art. No.	Designation	Net sales price \$
1678.370	PVC hose - diam. .23 x .34 x 78.7 in.	4.01	3130.020	Cover with four slots	5.81
1678.380	PVC hose - diam. .23 x .34 x 393.6 in.	18.70	3130.130	Impeller housing w. nozzle f. Comline	46.16
1678.390	PVC hose - diam. 23 x .34 x 39.1 in.	2.74	3130.160	Nozzle	9.25
1691.100	Glass tank with cover Kit 16/21	259.36	3130.165	Net bag 2 pieces	7.73
1891.100	Glass tank with cover Kit 18/18.7	259.36	3130.250	Comline skimmer support	23.56
2002.000	Turbelle® classic 2002	309.82	3130.340	Pressure pipe	3.03
2002.020	Cover	22.01	3130.360	M6 air regulating screw	2.10
2002.100	Motor housing	61.75	3130.482	2 hoses+ cap	11.69
2002.110	Motor with cable	112.89	3150.110	Switched Socket Outlet	68.75
2002.220	Rotor	35.82	3150.250	Support for sensor	12.81
2002.710	Bio connection for 2002, 4002	13.92	3150.300	Sensor w.cinch plug	34.23
3000.020	O-ring seal, 78x2.5mm	2.08	3150.310	Holder board	2.47
3000.030	Cooling duct	4.87	3152.000	Osmolator® nano	99.37
3000.040	Upper bushing	1.68	3152.300	Sensor for 3152	23.47
3000.050	Magnetic rotor	17.57	3152.630	Sensor housing	4.01
3000.070	Drive shaft	9.84	3155.000	Osmolator®	210.23
3000.080	Brake shoes 2 pcs.	3.35	3155.100	Sliding unit for sensor	3.70
3000.090	Brake shell + ring	9.91	3155.200	Sliding unit for level sensor	3.18
3000.092	Brake ring	1.71	3155.250	Support for Osmolator	28.80
3000.110	Clampring	3.28	3155.600	Magnet holder for two sensors	32.00
3000.120	Impeller	6.54	3155.610	Support for optical sensor	3.00
3000.130	Impeller housing	28.48	3155.630	Holder for floating switch	3.00
3000.220	Mounting bar	4.27	3162.000	Comline® Filter 3162	74.82
3000.225	Elastic ground, 1 pair	0.74	3162.100	Housing	21.19
3000.230	Sliding unit	3.20	3162.120	Filter panel	12.16
3000.240	Clamp holder	6.96	3162.130	Intake lid	6.44
3000.243	Screw set	2.48	3162.140	Rear cover	5.15
3000.244	Holding device extension	4.49	3162.150	Intermediate plate	3.72
3000.245	Cable fastener	16.13	3162.160	Rear Plate	17.45
3000.250	Turbelle® holder	10.30	3162.170	Bottom plate	3.72
3000.260	Holding device extension	12.78	3162.200	Filter fleece	5.72
3000.261	Plate without thread	1.63	3162.300	Woven carbon filter medium	7.02
3000.264	2 screws M5x10mm	2.27	3162.500	Spacer for Magnet	4.87
3000.270	Adhesive attachment for holder	3.28	3162.760	Tube 19x108 mm	3.00
3000.280	Holding bracket	3.03	3163.000	Comline® Streamfilter 3163	87.45
3000.300	Set 3000.07+3000.08	11.49	3163.120	Streamfilter panel	12.16
3000.400	Set 3000.09+3000.10	11.95	3163.200	Streamfilter pump	40.07
3000.500	Internal parts Turbelle®	35.43	3163.770	Flow deflector	3.07
3000.600	Drive unit	29.83	3165.080	Bottom lid for 3165, 9002	4.11
3000.610	Upper bushing	1.68	3165.100	Nano Cleaner housing	44.21
3000.612	O-ring seal, 13x2.5mm	1.63	3165.400	Outlet pipe with flow deflector	5.37
3000.620	Bushing	4.80	3166.000	Comline filter	132.29
3000.630	Magnetic rotor	17.57	3166.020	Sliding cover	4.94
3000.640	Drive shaft	6.96	3166.050	Cap H7A, ø 19mm	1.63
3000.650	Bushing shell	4.80	3166.060	Cap black ø 9,5mm	1.63
3000.660	2 Brake shoes	2.13	3166.070	Retaining plate	4.94
3000.780	Bushing, diam. 25/28mm (.98 / 1.1 in.)	2.72	3166.100	Filter housing	64.24
3005.000	Turbelle® e-jet 3005	148.83	3166.200	Comline bell compl.	32.23
3005.015	Motor block	66.67	3166.231	Sliding unit Comline holder right	3.20
3005.130	Motor block cover	3.20	3166.232	Sliding unit Comline holder left	3.20
3005.700	Drive unit	25.60	3166.250	Comline support	16.51
3005.740	Bushing and attenuation disk	2.37	3166.280	Pot with handle	23.05
3060.400	Bracket	3.69	3166.500	Comline filter	161.49
3060.410	Suction cup holder	6.80	3166.760	Tube 19x300 mm	5.82
3060.440	Suction bell 4 pcs.	2.64	3167.000	Comline double filter	198.90
3060.450	Silencer holder for old Turbelle®	16.42	3167.100	Filter housing	64.24
3060.460	Silencer holding device	16.42	3167.200	Comline bell complete for 3167	32.23
3110.141	Skimmer cup 300 ml (10.1 f oz.)	14.52	3167.280	Pot with handle	23.05
3110.150	Skimmer cup lid	8.03	3167.500	Comline double filter	243.94
3110.310	Cover with slots	8.25	3170.000	Comline Calcium Automat	321.30
3110.480	Elbow for air hose 3110/9002	2.64	3170.100	Housing of Calcium Automat	53.13
3115.480	Silencer with hose	11.69	3170.134	Connecting unit to 800.040	19.05



Total price list

Art. No.	Designation	Net sales price \$	Art. No.	Designation	Net sales price \$
3170.135	Connecting unit to 1073.008	19.05	6025.130	Propeller housing	12.15
3170.200	Reactor of Calcium Automat	152.70	6025.200	Protective grating	9.88
3170.300	Reducing adapter and T piece	3.28	6025.250	Nanostream® Rock	52.02
3170.460	Y branch	6.27	6025.500	Magnet holder	40.35
3170.500	Calcium Automat Extension	132.29	6025.501	Magnet extension	24.23
3174.112	Screw cap and seal	8.25	6025.510	Clamp	8.35
3178.000	Mangrove Box	88.43	6025.512	Magnet holder	23.40
3178.500	Black mangrove	12.99	6025.515	Magnet holder	28.99
3178.710	Bio connection for 3005	12.74	6025.650	Silence Clamp Nanostream	11.76
3179.000	Bio-hydro-reactor	132.29	6025.700	Drive unit	12.15
3179.020	Sliding cover with cutout	4.94	6025.740	Disc for drive	1.52
3179.050	Filter mat	6.19	6045.000	Turbelle® nanostream® 6045	91.78
3179.100	Housing	53.13	6045.100	Motor block	45.16
3200.000	Cartridge Filter 3200	57.35	6045.110	Motor block	45.16
3200.520	Connector	18.77	6045.130	Propeller housing	14.42
4002.000	Turbelle® classic 4002	346.08	6045.131	Propeller housing	14.42
4002.020	Cover	25.28	6045.132	Blue regulating pipe	14.42
4002.060	Screw M 4x20 V2A	1.19	6055.000	Turbelle® nanostream® 6055	239.10
4002.070	Motor bearer 2 pcs.	6.33	6055.100	Motor block	129.03
4002.080	Retainer 10 pcs.	7.45	6055.240	Power supply unit 12-24V DC	44.03
4002.090	Fan	7.93	6055.241	6 Jumper in a bag for 6055.240	6.69
4002.100	Motor housing	61.69	6055.700	Drive unit for 6055	12.15
4002.110	Motor with cable	139.40	6055.740	Bushing and attenuation disk	2.37
4002.120	Rubber mount 4 pcs.	6.19	6060.120	Hydro propeller	12.28
4002.130	Shaft set	12.57	6060.250	Turbelle® holder	15.56
4002.131	Pinion with spring	6.19	6065.000	Turbelle® stream 6065	141.34
4002.200	Shaft housing	19.01	6065.100	Motor block	56.51
4002.202	Clamping ring	5.16	6065.130	Propeller housing	28.48
4002.203	Felt strip	1.56	6065.500	Magnet Holder	75.06
4002.220	Rotor	34.36	6065.510	Clamp	11.32
4002.250	Repair kit	18.91	6065.515	Magnet Holder	35.02
4002.260	Motor bearings 2pcs.	25.28	6065.520	Magnet Holder	75.06
4002.770	Flow deflector	5.71	6065.600	Magnet Holder Silence	86.30
4017.000	Controller Osmolator® nano	78.13	6065.620	Silicon buffer	3.58
5000.020	Metering pump	23.49	6065.650	Silence clamp	18.38
5000.150.S	Protective grid	9.69	6065.700	Drive unit	23.29
5000.240	Hose clamp	1.87	6065.701	Drive unit	19.71
5000.300	Sensor w.cinch plug	34.23	6065.709	Shaft for drive unit	8.40
5000.380	PVC hose - diam. .15 x .27 x 393.6 in.	14.65	6065.792	Disc for drive	1.52
5000.390	PVC hose - diam. .15 x .27 x 118.1 in.	5.13	6080.120	Hydro propeller	12.28
5001.390	Silicon hose - diam. 6x1,5mm x5m	18.72	6080.130	Suction housing	46.34
5002.100	Storage container 13L (3.4 USgal.)	11.13	6080.200	Protective grating	11.60
5002.250	Storage container 27L (7.1 USgal.)	21.17	6080.230	Sliding piece with hinge	6.00
5005.000	Turbelle® e-jet 5005	209.44	6080.250	Holder stabilizer	4.63
5005.015	Motor block	112.20	6080.400	Swivel arm	4.63
5012.010	Power supply unit 11V	19.77	6080.500	Magnet holder	60.23
5016.100	Velcro® strips 2x5,5cm (2.1 in.)	1.28	6080.520	Silence clamp	14.89
5017.000	Osmolator® Controller	156.43	6080.600	Drive unit	34.47
5020.250	Air adjust (chock)	1.99	6080.640	Drive shaft	8.50
5020.300	Sensor w. jack plug	34.23	6080.641	Screw M4x16	1.35
5024.020	Top cover for 5024,3165	4.11	6085.000	Turbelle® stream 6085	186.35
5024.040	Universal pump Mini 5024.04	17.96	6085.100	Motor block	95.94
5024.042	Drive unit for 5024.04	5.22	6085.700	Drive unit	27.04
5074.000	Calcium Dispenser	107.33	6085.701	Drive unit	23.46
5074.010	Non-return valve water	3.86	6095.000	Turbelle® nanostream® 6095	273.63
5074.500	Calcium hydroxide - 250 g (.55 lbs.)	11.90	6095.100	Motor block	136.48
6015.000	Turbelle® nanostream® 6015	40.18	6095.130	Propeller housing	14.44
6015.100	Motor block	24.55	6095.700	Drive unit	12.29
6015.500	Magnet holder	19.38	6100.120	Hydro propeller	12.28
6015.700	Drive unit	8.04	6100.700	Drive unit+ propeller	33.84
6025.000	Turbelle® nanostream® 6025	64.94	6105.000	Turbelle® stream 6105	326.20
6025.100	Motor block	32.72	6105.001	Turbelle® stream 6105 DC	340.17



Total price list

Art. No.	Designation	Net sales price \$	Art. No.	Designation	Net sales price \$
6105.100	Motor block	183.50	6508.130	Propeller housing	208.36
6105.240	Power supply unit 12-24V DC	59.21	6508.134	M6 screw set	18.46
6105.242	24 V jumper for 6105.240	2.23	6508.500	Magnet Holder masterstream	298.24
6105.243	18 V jumper for 6105.240	2.23	6508.600	Cable Safe masterstream	34.98
6105.244	12 V jumper for 6105.240	2.23	6508.700	Drive unit	133.94
6105.500	Safety Connector	53.13	6508.750	Axle and accessories	54.77
6105.515	Magnet Holder	43.90	6512.100	Motor block	2232.46
6105.600	Cable Safe	10.86	6512.120	12-14 VDC power supply unit	483.70
6105.700	Drive unit	30.49	6515.100	Motor block	2753.36
6105.701	Drive unit	26.91	6515.101	O-ring seal 110 x 5mm	13.09
6125.000	Turbelle® stream 6125	247.64	6515.240	24-28 VDC power supply unit	684.62
6125.100	Motor block	125.25	6515.245	Power Supply Box	620.62
6125.700	Drive unit	30.49	6515.246	DC pump cable 5 m (196.8 in.)	52.09
6125.701	Drive unit	26.91	6515.500	Safety Connector	177.11
6155.000	Turbelle® stream 6155	567.81	6550.000	Turbelle® masterstream 6550	1550.81
6155.001	Turbelle® stream 6155 DC	567.81	6560.000	Turbelle® masterstream 6560	2853.94
6155.100	Motor block	393.79	6560.001	Turbelle® masterstream 6560 DC	2648.11
6200.120	Hydro propeller	12.28	6580.000	Turbelle® masterstream 6580	3689.50
6200.130	Suction housing	54.30	6580.001	Turbelle® masterstream 6580 DC	3317.42
6200.230	Sliding piece + screw	6.00	7005.140	Calibration solution 600 µS/cm	7.93
6200.250	Stream Rock	75.99	7008.000	Reef Excel® Lab Marine Salt, 8kg	33.80
6200.500	Magnet holder.	84.88	7008.100	Reef Excel® Lab Marine Salt, 2kg	10.48
6200.509	9 elastic pads for Magnet Holder	3.28	7008.200	Reef Excel® Lab Marine Salt, 16 kg	70.12
6200.700	Drive unit + propeller	45.26	7008.300	Reef Excel® Lab Marine Salt, 10 x 2kg	104.85
6205.100	Motor block	268.34	7008.400	Reef Excel® lab marine salt, 4 x 8kg	135.19
6205.130	Propeller housing	34.33	7008.500	Reef Excel® lab marine salt, 20kg	80.31
6205.200	Protective grating	13.09	7010.000	Reef Excel® Lab nitrate test	39.05
6205.500	Magnet Holder	114.36	7011/2	Reef Excel® Lab nitrate test	66.01
6205.501	Magnet extension	60.86	7012/2	Reef Excel® Lab nitrite test	108.17
6205.600	Magnet Holder Silence	138.56	7013.000	Reef Excel® Lab hardness test	58.74
6205.700	Drive unit	42.34	7014/2	Reef Excel® Lab carbonate test	68.12
6205.701	Drive unit	38.76	7015/2	Reef Excel® Lab calcium test	90.55
6206.100	Nano Wavebox housing	56.70	7016.000	Reef Excel® Lab phosphate test	74.36
6206.200	Nano Wavebox pump	158.81	7016.500	Reef Excel® Lab phosphate test	137.70
6208.000	Comline® Wavebox	339.12	7017/2	Reef Excel® Lab ammonium test	74.46
6208.130	Wavebox lid	6.44	7019/2	Reef Excel® Lab iron test	67.78
6208.200	Wavebox pump	152.55	7020/2	Reef Excel® Lab hardness test	60.71
6208.512	Magnet holder	24.90	7028.900	TUNZE® Aquawind	78.93
6212.020	Cover with twelve slots	5.81	7028.902	Power supply unit	39.00
6212.070	Retaining plate	22.95	7028/3	Temperature Controller Set °C	252.54
6212.200	Protective grating	11.60	7028/3_A	Temperature controller set °F	252.54
6212.300	Sponge-ring	11.34	7030.140	Calibration solution 50 mS/cm	7.93
6215.000	Wavebox	524.96	7040.120	Buffer solution for pH 7 and 9	12.96
6215.015	Motor block	303.61	7040.130	Buffer solution for pH 5 and 7	13.24
6215.100	Wavebox housing	81.85	7040.140	Buffer set pH 5/7/9	21.89
6215.200	Wavebox pump	327.43	7040.200	Cleaning solution	7.93
6215.300	Foam-rubber pan	9.11	7040.400	3 m KCl solution 50ml	6.85
6215.500	Wavebox extension	468.08	7055.100	mV Electrode	185.25
6250.510	O-ring seal 50x6 mm	6.66	7070.010	CO2 non-return valve	14.06
6255.000	Turbelle® stream 6255	687.86	7070.012	Glue-in nipple for hose, diam. 4x6mm (.15x.23 in.)	1.29
6255.100	Motor block	478.25	7070.015	Glue-in nipple 30° for hose, diam. 4x6mm (.15 x .23 in.)	1.29
6255.130	Propeller housing	50.66	7070.100	pH Electrode 7070.10	98.60
6255.701	Drive unit	55.95	7070.110	pH Electrode 7070.11	110.43
6300.130	Suction housing ø63mm	75.03	7070.250	Wall holder	6.41
6300.240	Power supply unit 24 VDC	189.76	7070/2	pH controller	333.14
6300.700	Drive unit + propeller	57.23	7071/2	mV controller	378.91
6305.100	Motor block	420.35	7072.200	Silicon hose - diam. 4x1,5mm x5m	18.72
6305.130	Propeller housing	60.15	7072.300	PVC hose - diam. .15 x .23 x 196.8 in.	5.78
6305.700	Drive unit	42.34	7074.110	CO2 Valve Set	139.98
6305.701	Drive unit	38.76	7074.400	12V solenoid valve	101.94
6508.100	Motor block	997.17	7074.500	CO2 diffuser	44.55
6508.120	12 VDC power supply unit	319.38	7074/2	pH/CO2 controller set	461.92



Total price list

Art. No.	Designation	Net sales price \$	Art. No.	Designation	Net sales price \$
7075.120	Switched socket outlet	113.12	8104.000	T8 reflector, tube L 90 cm (35.4 in.), 30 W	21.91
7075/2	mV Controller Set	475.18	8105.000	T8 reflector, tube L 120 cm (47.2 in.), 36 W	25.07
7077.110	Press. gauche 7077/3 0-250 bar	20.12	8107.000	T8 reflector, tube L 150 cm (59.06 in.), 58 W	29.28
7077.150	Seal ring for 7077.100	1.63	8107.010	2 tube brackets, diam. 26 mm (1.02 in.)	5.19
7077.210	Fine adjustment valve 7077/3	19.32	8108.000	T12 reflector, tube L 150 cm (59 in.), 140 W	28.65
7077.300	Seal ring for 7077/2	4.11	8108.010	2 tube brackets, diam. 38 mm (1.49 in.)	7.16
7077.310	Seal ring for 7077/3	4.11	8110.000	T5 reflector, tube L 54.9 cm (21.6 in.), 24 W	17.78
7077/3	Pressure reducer	107.09	8110.010	2 tube brackets, diam. 16 mm (.62 in.)	4.63
7079.150	CO2 cylinder - 1.5 kg (3.3 lbs.)	163.72	8111.000	T5 reflector, tube L 84.9 cm (33.4 in.), 39 W	20.71
7079.200	CO2 cylinder - 2.0 kg (4.4 lbs.)	170.41	8112.000	T5 reflector, tube L 114.9 cm (45.2 in.), 54 W	21.70
7080.000	Theben-timer 7080	41.66	8114.000	T5 reflector, tube L 144.9 cm (57.05 in.), 80 W	26.52
7092.000	Wavecontroller	79.89	8230.000	T8 built-in illuminator - ~ 97.5 cm (38.3 in.), 2x30 W	137.65
7092.300	Cable 1,2m Multicontroller	18.73	8236.000	T8 built-in illuminator - ~ 128 cm (50.3 in.), 2x36 W	163.83
7092.340	Y adapter	56.33	8322.000	T5 built-in illuminator - ~ 80 cm (31.4 in.), 2x24 W	191.76
7094.050	Photo-electric cell	17.75	8323.000	T5 built-in illuminator - ~ 100 cm (39.3 in.), 2x39 W	200.05
7094.400	Pump adapter	112.51	8325.000	T5 built-in illuminator - ~ 126 cm (49.6 in.), 2x54 W	212.78
7095.000	Multicontroller	284.32	8328.000	T5 built-in illuminator - ~ 156 cm (61.4 in.), 2x80 W	321.60
7095.050	Photo-electric cell for 7095	23.47	8460.000	Lamp - Design 8460	549.50
7095.051	Cable clamp 3mm	1.87	8465.000	Lamp - Design 8465	683.14
7096.000	Multicontroller	172.60	8480.000	Lamp - Extension 8480	1261.06
7096.600	TUNZE Safeguard	74.56	8480.002	External Controller 250W,230V/50Hz	375.01
7200.600	Drive unit	30.42	8480.004	External Controller 400W,230V/50Hz	410.97
7400.610	O-ring seal red	1.63	8490.000	Lamp - Extension 8490	1307.53
7410.120	Impeller	6.54	8515.000	Nano RO station	99.70
7607/2	Water level alarm	203.87	8515.070	Preliminary filter with O-ring seal	14.89
8001.000	T8 Osram Lumilux 11 - L 44 cm (17.3 in.), 15 W	13.55	8515.080	Carbon Block O-ring seal	3.72
8002.000	T8 Osram Lumilux 11 - L 59 cm (23.3 in.), 18 W	9.89	8515.120	Carbon Block Filter	10.82
8003.000	T8 Osram Lumilux 11 - L 90 cm (35.4 in.), 30 W	14.98	8515.500	Thin-film composite membrane	70.02
8004.000	T8 Osram Lumilux11 - L 120 cm (47.2 in.), 36 W	9.06	8515.520	Capillary for 8515	19.45
8005.000	T8 Osram Lumilux11 - L 150 cm (59 in.), 58 W	15.17	8515.701	Metric adapter	10.66
8006.000	T8 Osram blue 67 - L 59 cm (23.3 in.), 18 W	19.28	8515.702	Angle for RO tube	7.30
8007.000	T8 Osram blue 67 - L 90 cm (35.4 in.), 30 W	22.90	8522.120	Sediment filter 5µm	12.60
8008.000	T8 Osram blue 67 - L 120 cm (47.2 in.), 36 W	26.17	8532.010	1/4" nylon nipple	5.81
8009.000	T8 Osram blue 67 - L 150 cm (59 in.), 58 W	19.98	8532.020	1/4 in. elbow for reverse osmosis hose	5.86
8016.000	T12 Philips Aqua Coral - L 120 cm (47.2 in.), 40 W	39.41	8532.021	Clamp for RO connection	1.63
8018.000	T12 Philips Aqua Coral - L 59 cm (23.3 in.), 40 W	45.26	8532.030	1/8 in. elbow for reverse osmosis hose	6.57
8020.000	T12 Philips Aqua Coral - L 150 cm (59 in.), 140 W	56.98	8532.040	1/8 in. junction for hose 6.3 mm (.24 in.)	7.30
8040.000	HQI bulb 70W/D, 5,200 K, RX7s	61.35	8532.050	Pressure gauge 1/8"	18.15
8041.000	HIT bulb 70W, 10,000 K, RX7s	98.74	8532.060	Screw 3,2x17mm Kogapur	0.32
8041.100	HIT bulb 70W, blue, >15 K, RX7s	84.43	8532.070	O-ring seal for membrane housing	3.35
8042.000	HQI bulb 150W/D, 5,200 K, RX7s	66.88	8532.080	O-ring seal for filter housing	5.74
8043.000	HIT bulb 150W, 10,000 K, RX7s	74.29	8533.000	RO TDS Monitor	57.00
8043.070	HIT bulb 150W, 14,000 K, RX7s	134.76	8533.100	T-piece	9.37
8043.100	HIT bulb 150W, blue, >15K, RX7s	115.07	8550.000	RO station	199.90
8043.500	HIT bulb 175W, 10,000 K, E40/39	154.18	8550.010	Wrench for 8550	7.30
8044.000	HQI bulb 250W/D, 5,200 K, Fc2/18	131.32	8550.020	1/4 in. junction for reverse osmosis hose	5.39
8045.000	HIT bulb 250W, 10,000 K, Fc2/18	85.23	8550.030	T-piece for RO Station 8550	8.45
8045.070	HIT bulb 250W, 14,000 K, Fc2/18	156.62	8550.090	1/4" connector with RO pipe	7.69
8046.000	HQI bulb 250W, blue, E40	211.52	8550.100	Carbon sediment filter 1 µm	15.22
8048.000	HQI bulb 250W, 10,000 K, E40	164.32	8550.120	Sediment filter 20 µm	10.79
8049.000	HQI bulb 400W, blue, E40	158.90	8550.501	Mixed Bed Ion Exchanger	22.77
8062.000	T5 Osram Daylight - L 54.9 cm (21.6 in.), 24 W	11.64	8550.510	Spare membrane for 8550	99.89
8063.000	T5 Osram Daylight - L 84.9 cm (33.4 in.), 39 W	11.64	8550.530	Capillary for 8550	6.78
8065.000	T5 Osram Daylight - L 114.9 cm (45.2 in.), 54 W	12.23	8550.600	RO Ion Exchanger	39.90
8068.000	T5 Osram Daylight - L 144.9 cm (57 in.), 80 W	13.88	8550.602	Clip for 8550.600	8.52
8072.000	T5 Narva blue 2 - L 54.9 cm (21.6 in.), 24 W	37.21	8550.700	RO permeate pump	117.57
8073.000	T5 Narva blue 2 - L 84.9 cm (33.4 in.), 39 W	41.39	8555.000	RO water controller	208.29
8075.000	T5 Narva blue 2 - L 114.9 cm (45.2 in.), 54 W	43.86	8555.100	Controller 8555	95.88
8078.000	T5 Narva blue 2 - L 144.9 cm (57 in.), 80 W	48.02	8555.200	Water valve	87.81
8101.000	T8 reflector, tube L 44 cm (17.3 in.), 15 W	14.04	8556.000	Reverse osmosis pressure hose /1m	4.15
8102.000	T8 reflector, tube L 59 cm (23.2 in.), 18 W	16.06	8557.000	3/4 in. screw connection	18.66
8103.000	T12 reflector, tube L 59 cm (23.2 in.), 40 W	15.98	8810.000	TUNZE LED marine	173.03



Total price list

Art. No.	Designation	Net sales price \$	Art. No.	Designation	Net sales price \$
8820.000	TUNZE LED white	173.03	9420.046	Cooling duct	4.77
8830.000	TUNZE LED blue	173.03	9420.047	Drive unit with bushing	54.66
9002.000	DOC Skimmer 9002	133.94	9420.048	Silencer with hose	11.60
9002.030	Upper lid	9.89	9420.211	Skimmer cup	145.46
9002.100	Housing for 9002	55.52	9420.231	Skimmer cup lid	90.06
9002.250	Nano holder	12.61	9420.250	Disc	21.70
9002.400	Outlet pipe with nozzle	16.36	9420.260	Angle 90 deg.	11.76
9004.000	DOC Skimmer 9004	153.77	9420.300	Outlet pipe 220 mm (9 in.)	7.53
9004.015	Motor block	21.19	9420.380	Outlet fleece, 1 ea.	4.77
9004.040	Comline® Foamer	38.36	9420.400	Booster-Ring	3.41
9004.042	Impeller cover	9.02	9430.000	DOC Skimmer 9430	656.60
9004.047	Drive unit	12.30	9430.040	Hydrofoamer Silence	235.13
9004.120	Skimmer panel	12.16	9430.041	Motor block with screw	125.93
9004.130	Upper plate	6.00	9430.042	Cover with O ring seal and nozzle	19.59
9004.140	Skimmer cup	9.74	9430.047	Drive unit with bushing	59.67
9004.150	Skimmer cup cover	5.44	9430.048	Silencer with hose	11.60
9004.160	Skimmer plate	14.45	9430.241	Housing	203.21
9004.170	Bottom plate	3.72	9430.300	Outlet pipe 190 mm	6.82
9005.140	Skimmer cup	58.58	9440.300	Outlet pipe 120 mm (4.7 in.)	5.09
9005.400	DOC skimmer extension set	54.20	9460.211	Skimmer cup	446.49
9006.000	DOC Skimmer 9006.	286.41	9460.231	Skimmer cup lid	130.77
9006.015	Motor block	57.16	9460.241	Housing	771.79
9006.040	Hydrofoamer e-jet	105.84	9460.250	Disc	41.70
9010.100	Housing	128.44	9460.300	Outlet pipe 280 mm (11 in.)	8.67
9010.200	Cover for aspirator	11.79	9480.000	Master DOC Skimmer 9480	1401.01
9010.300	Cover with sliding cover	12.42	9480.300	Outlet pipe 240 mm (9.4 in.)	7.81
9010.350	Cap with cover	5.44	TS24	Turbelle® stream Kit TS24	993.84
9010.360	Air regulator screw M8	2.27	TS48	Turbelle® stream Kit TS48	1703.37
9010.400	Sleeve below cover	11.79	END		
9010.700	Tube with bushing	24.73			
9011.000	DOC Skimmer 9011.	365.20			
9011.015	Motor block	98.53			
9011.040	Hydrofoamer e-jet	170.86			
9011.740	Bushing and attenuation disk	2.37			
9015.140	Skimmer cup	124.33			
9016.000	DOC Skimmer 9016.	487.77			
9020.140	Foam extraction unit	112.27			
9021.000	DOC Skimmer 9021.	572.42			
9206.000	DOC Skimmer 9206.	286.41			
9211.000	DOC Skimmer 9211.	362.70			
9400.048	Silencer with hose	11.60			
9410.000	DOC Skimmer 9410	345.14			
9410.040	Hydrofoamer Silence	160.08			
9410.041	Motor block with screw	97.48			
9410.042	Cover with O ring seal and nozzle	16.72			
9410.046	Ceramic bearings, 1 ea.	8.56			
9410.047	Drive unit with bushing	52.95			
9410.048	Silencer with hose	11.60			
9410.200	Post-filter bag	15.83			
9410.241	Housing	119.44			
9410.250	Disc	15.76			
9410.300	Outlet pipe 155mm (6.1 in.)	5.67			
9410.400	Adapter ring for 9410.	3.41			
9410.500	Post-filter	34.51			
9415.000	DOC Skimmer 9415	572.89			
9415.241	Housing	174.59			
9415.300	Outlet pipe 150 mm	6.10			
9420.040	Hydrofoamer Silence	197.60			
9420.041	Motor block with screw	111.62			
9420.042	Cover with O ring seal and nozzle	18.15			
9420.043	Screw for Motor block	1.71			
9420.045	Hose clip	5.65			